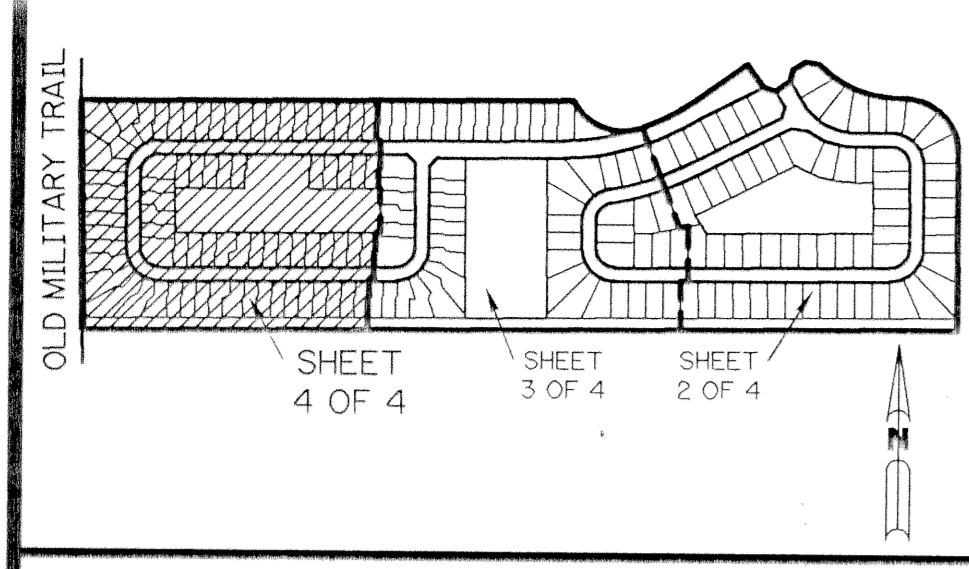


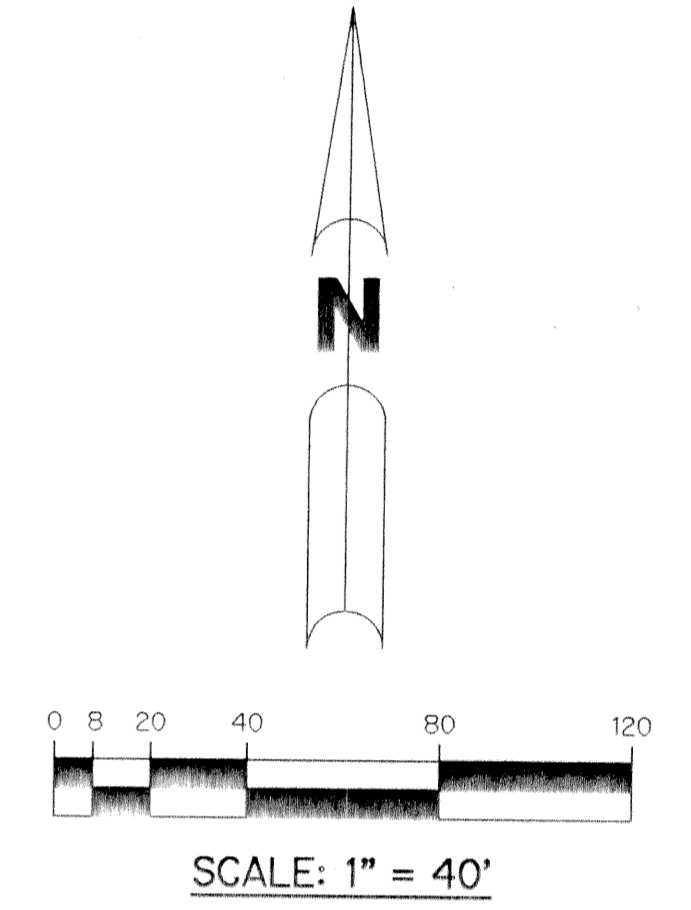
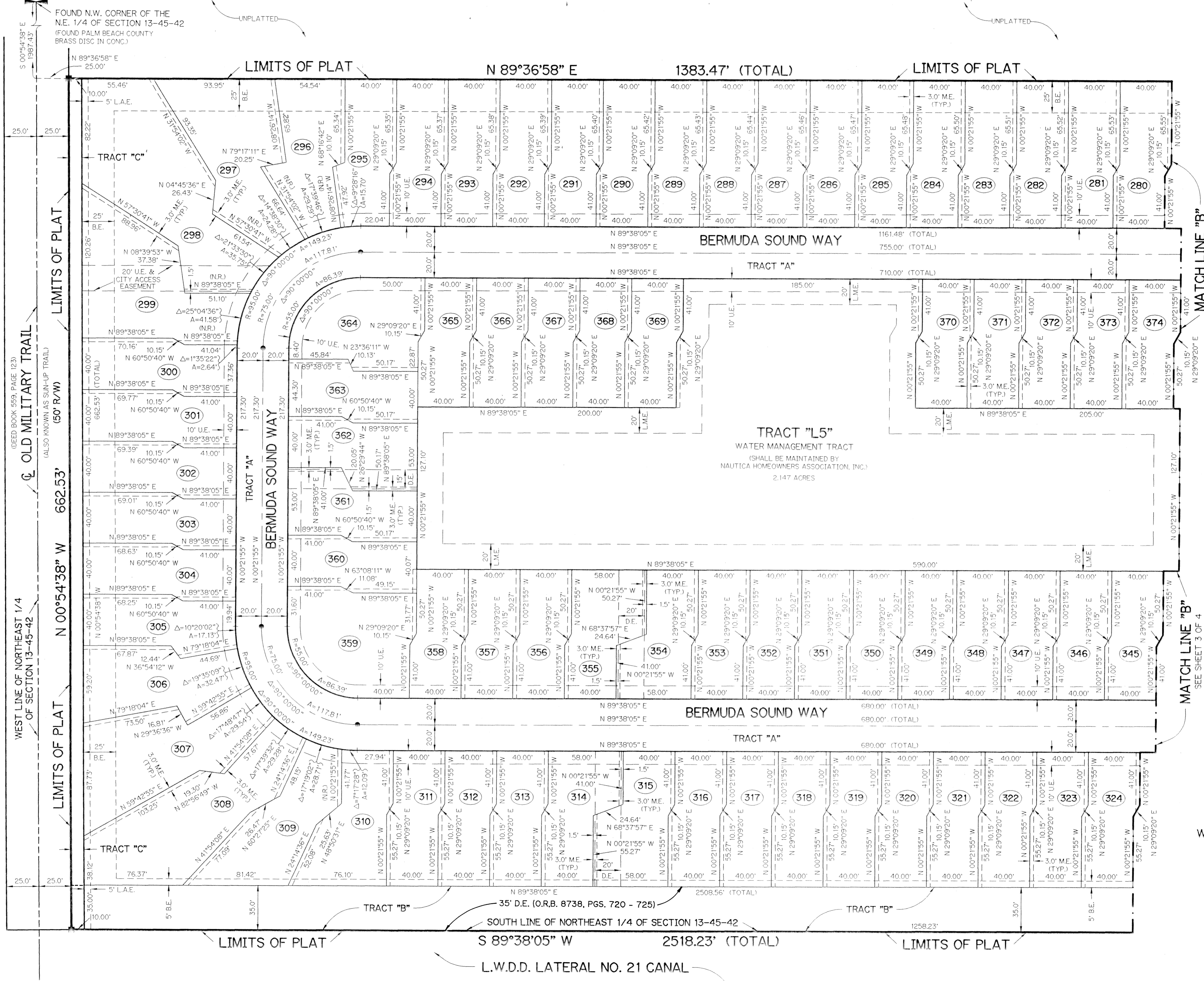
NAUTICA P.U.D. - PLAT TWO

A PLANNED UNIT DEVELOPMENT
A PARCEL OF LAND LYING IN SECTION 13,
TOWNSHIP 45 SOUTH, RANGE 42 EAST, CITY OF BOYNTON BEACH,
PALM BEACH COUNTY, FLORIDA.

SHEET 4 OF 4 JANUARY, 1995



KEY MAP
N.T.S.



SCALE: 1" = 40'

- LEGEND:**
- - PERMANENT REFERENCE MONUMENT, PLS #4190
 - - PERMANENT CONTROL POINT, PLS #4190
 - △ - DELTA ANGLE
 - A - ARC LENGTH
 - B.E. - BUFFER EASEMENT
 - D.E. - DRAINAGE EASEMENT
 - L.A.E. - LIMITED ACCESS EASEMENT
 - L.M.A.E. - LAKE MAINTENANCE ACCESS EASEMENT
 - L.M.E. - LAKE MAINTENANCE EASEMENT
 - L.W.D.D. - LAKE WORTH DRAINAGE DISTRICT
 - M.E. - DRAINAGE, MAINTENANCE AND OVERHANG EASEMENT
 - N.R. - NOT RADIAL
 - N.T.S. - NOT TO SCALE
 - O.R.B. - OFFICIAL RECORD BOOK
 - P.B. - PLAT BOOK
 - P.C.S. - PAGES
 - P.L.S. - PROFESSIONAL LAND SURVEYOR
 - R - RADIUS
 - R/W - RIGHT-OF-WAY
 - S.T. - SURVEY TIE
 - U.E. - UTILITY EASEMENT

SUBDIVISION * Nautica P.U.D. - Plat Two
BOOK 75 PAGE 36 FLOOD MAP *
FLOOD ZONE - ZONING
QUAD * - ZIP CODE
SE - PUD NAME
Boynton Bch

THIS INSTRUMENT PREPARED BY
WILBUR F. DIVINE, P.L.S. 4190, STATE OF FLORIDA
LAWSON, NOBLE AND ASSOCIATES, INC.
ENGINEERS PLANNERS SURVEYORS
WEST PALM BEACH, FLORIDA